

QUICK GUIDE TO GOAT BREEDS



Nubian

Floppy ears & Roman nose

5% butterfat, 1.5/2 gallons of milk a day

135-175lbs

Hardy, highly vocal, independent and strong-willed. Very friendly.



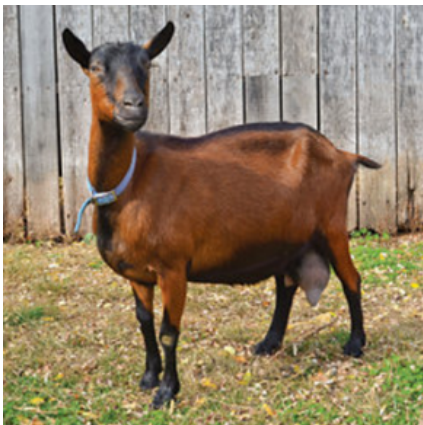
Nigerian Dwarf

Small, with erect ears and a wide variety of colors

10% butterfat, 2 quarts of milk per day

65-75lbs

Extremely hardy, curious, very friendly and people-oriented.



Oberhasli

Always brown with black stripes, erect ears

4% butterfat, 1.5 gallons of milk per day

120-150lbs

Friendly, calm, and gentle. Relatively quiet.



Saanen

White or cream colored with erect ears and long legs

3-4% butterfat, 2 gallons of milk per day

135-150lbs

Calm and sweet, extremely hardy



Boer

Often white with brown head/ears, sometimes spotted brown and white or black and white

High butterfat but low milk production and dries up quickly -- traditionally a meat breed

250-300lbs

Docile, sweet, excellent mothers

QUICK GUIDE TO GOAT BREEDS



Angora

Cream colored, pendulous ears & long, curly hair
Fiber goat, not traditionally milked -- shorn twice a year
175-200lbs
Docile, curious, and friendly



Alpine

Various colors, with erect ears, usually horned
4% butterfat, 1-2 gallons of milk per day
135-170lbs
Friendly, easy-going, very curious



Toggenburg

Chocolate or fawn with white, erect ears
3% butterfat, a gallon of milk per day
120-150lbs
Friendly, quiet, and calm



Tennessee Fainting

Wide variety of colors, erect ears, slightly chubby
Traditionally raised for meat, and as pets
75-150lbs
Also called Myotonic or Fainting Goats
Friendly, amusing, and clever



La Mancha

Very distinct, tiny ears
4% butterfat, 1-2 gallons of milk per day
130-165lbs
Curious, alert, and clever